

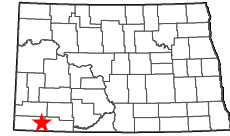
# Gascoyne Lake

Bowman County

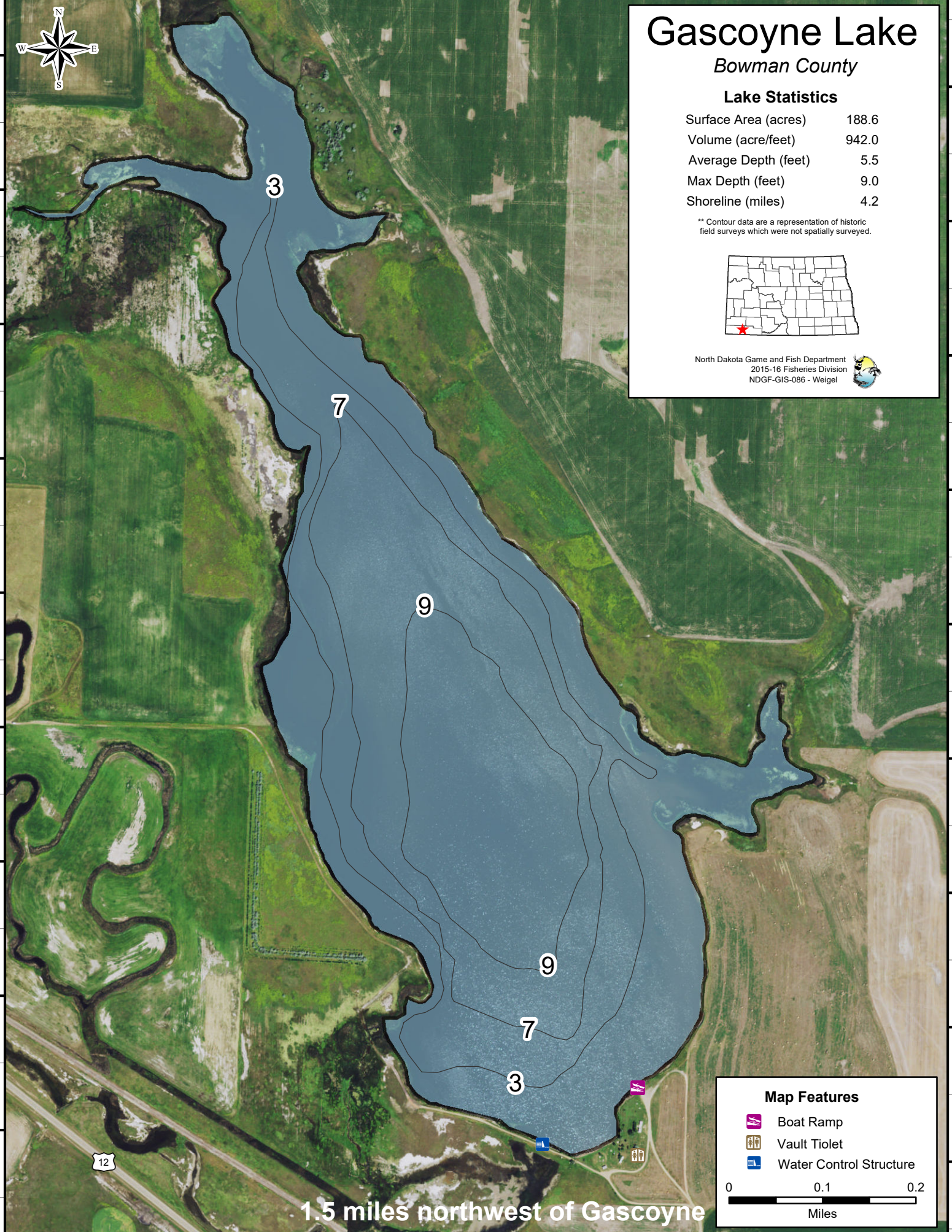
## Lake Statistics

Surface Area (acres)	188.6
Volume (acre/feet)	942.0
Average Depth (feet)	5.5
Max Depth (feet)	9.0
Shoreline (miles)	4.2

\*\* Contour data are a representation of historic field surveys which were not spatially surveyed.



North Dakota Game and Fish Department  
2015-16 Fisheries Division  
NDGF-GIS-086 - Weigel



### Map Features

- Boat Ramp
- Vault Toilet
- Water Control Structure

0 0.1 0.2  
Miles

1.5 miles northwest of Gascoyne

12