

102°59'32"W 102°59'18"W 102°59'4"W 102°58'50"W 102°58'36"W 102°58'22"W 102°58'8"W 102°57'54"W 102°57'40"W



Cedar Lake

Slope County

Lake Statistics

Surface Area (acres)	219.4
Volume (acre/feet)	1,130.4
Average Depth (feet)	5.1
Max Depth (feet)	14.4
Shoreline (miles)	12.7

** Based on Full Pool Elevation



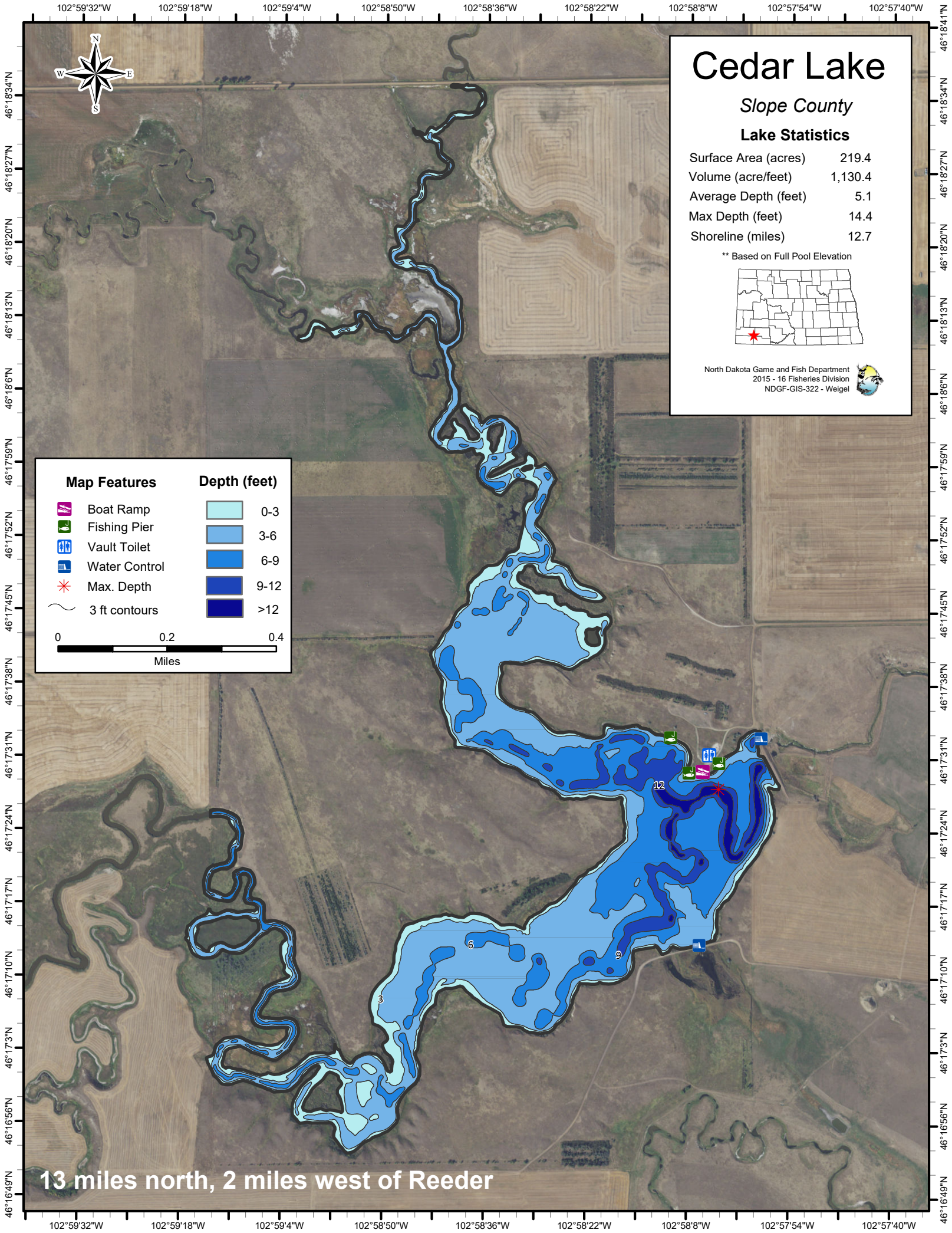
North Dakota Game and Fish Department
2015 - 16 Fisheries Division
NDGF-GIS-322 - Weigel



Map Features	Depth (feet)
Boat Ramp	0-3
Fishing Pier	3-6
Vault Toilet	6-9
Water Control	9-12
Max. Depth	>12 depth color swatch"/> >12
3 ft contours	

0 0.2 0.4
Miles

13 miles north, 2 miles west of Reeder



46°18'34"N
46°18'27"N
46°18'20"N
46°18'13"N
46°18'6"N
46°17'59"N
46°17'52"N
46°17'45"N
46°17'38"N
46°17'31"N
46°17'24"N
46°17'17"N
46°17'10"N
46°17'3"N
46°16'56"N
46°16'49"N

46°18'41"N
46°18'34"N
46°18'27"N
46°18'20"N
46°18'13"N
46°18'6"N
46°17'59"N
46°17'52"N
46°17'45"N
46°17'38"N
46°17'31"N
46°17'24"N
46°17'17"N
46°17'10"N
46°17'3"N
46°16'56"N
46°16'49"N

102°59'32"W 102°59'18"W 102°59'4"W 102°58'50"W 102°58'36"W 102°58'22"W 102°58'8"W 102°57'54"W 102°57'40"W